

SIEMENS

Economy & Performance Without Compromise
SIREMOBIL Compact



SIREMOBIL Compact

The capabilities of SIREMOBIL in a Compact system

Versatility

The capabilities and performance of SIREMOBIL® Compact have established it as a reliable, versatile & economical mobile C-arm designed to meet the full requirements of today's surgery.

Whether used in traditional applications like orthopedics, or in the growing areas of vascular intervention, gastrointestinal surgery or minimally-invasive procedures, SIREMOBIL Compact provides advanced features, thoughtful design and Siemens' quality.

Compact Size

Transportability and maneuverability are optimized with its small footprint and the extended, counterbalanced C-arm design. The system features a streamlined user interface for fast, efficient and easy operation.

Image Quality

The SIREMOBIL brand name is known for its superior imaging components, and SIREMOBIL Compact carries on the legacy. While image quality is maximized, all operating modes are optimized toward dose savings (Siemens' C.A.R.E.* program).

Subtraction & Roadmap

The vascular memory offers subtraction at the touch of a button for accurate visualization during interventional procedures, as well as roadmap for fast, easy positioning during catheterization and dilatation.

Upgradeability

A modular approach and broad memory options enable tailored configurations to match today's clinical needs. And importantly – when your surgical demands change, the system is readily upgradeable.

Networking

Keeping pace with the industry's development in networking, SIREMOBIL Compact can be equipped with on- and off-line communication capabilities.

Plus, as in all SIREMOBIL systems, we focus on the details that make your daily routine a lot easier...

*Combined Applications to Reduce Exposure

**SIREMOBIL Compact,
for the capabilities and performance
that make the difference**





SIREMOBIL Compact

High power output with virtually unlimited fluoro times

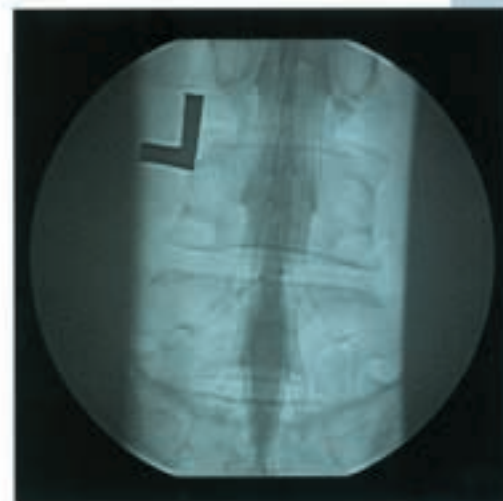
High Duty, Lower Dose

SIREMOBIL Compact is equipped with a high-duty X-ray generator to meet even the most demanding clinical applications. Challenging projections, like lateral lumbar which require penetration of dense anatomy, are easily mastered.

When cardiology applications such as EP studies and pacemakers placement demand exceptionally long fluoro times, you're ready.

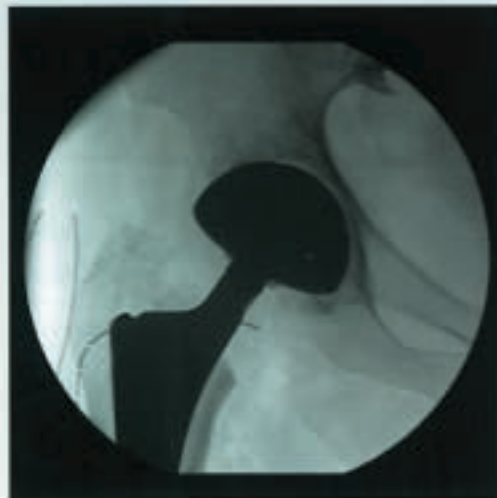
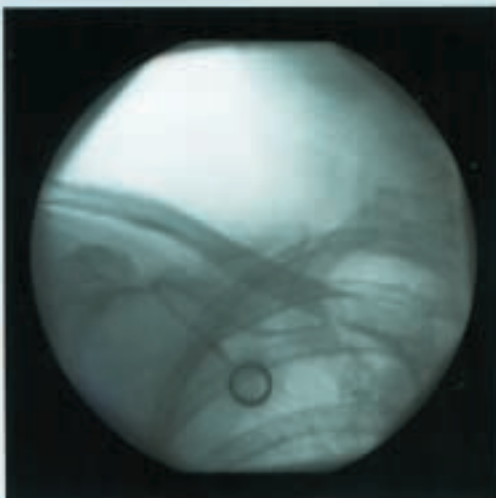
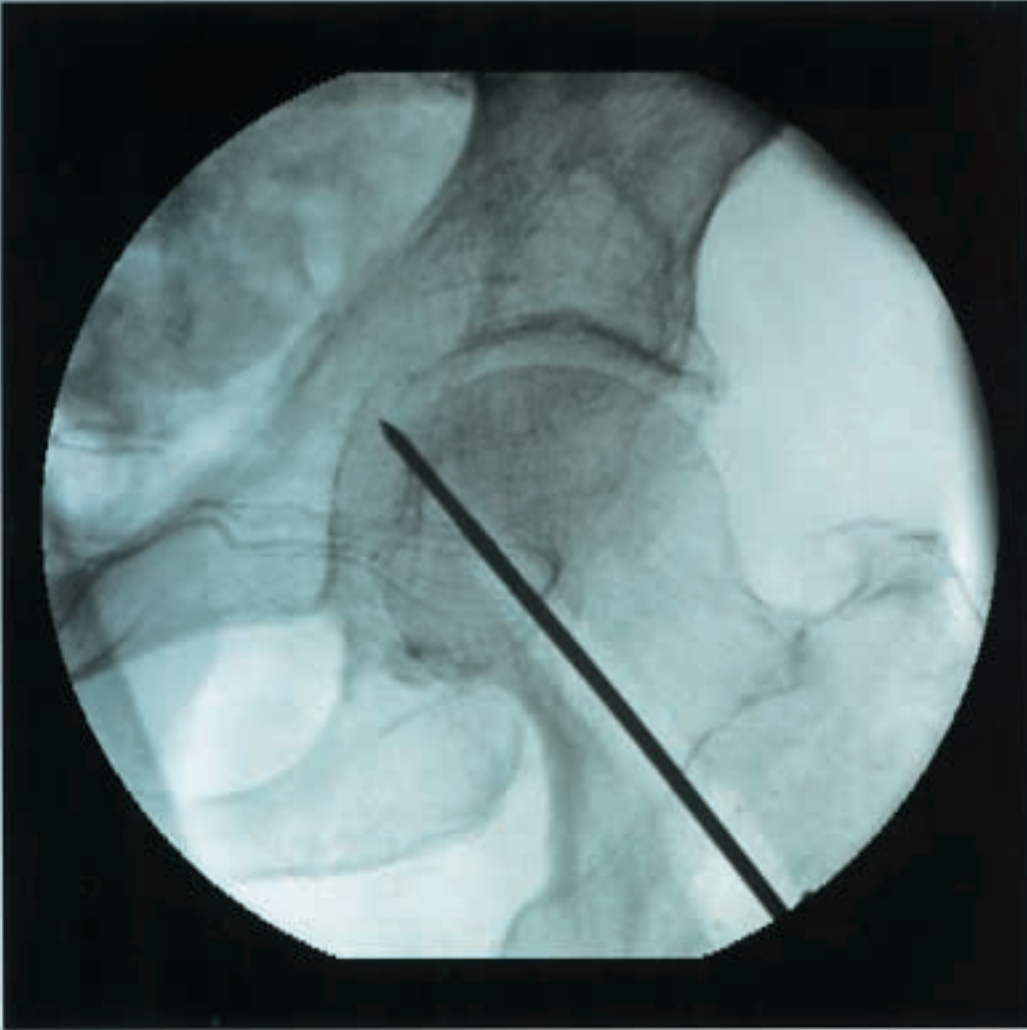
SIREMOBIL Compact's uniquely designed X-ray tube provides fluoro times virtually without limit – over 50 minutes – with high image quality and lowest possible dose.

Long fluoro times are even more important as mobile C-arms are used increasingly as back-up systems for other modalities.



The power you need –
for a full spectrum of OR applications

Select (virtually
unlimited)
fluoroscopy as one
of the five
operating modes



SIREMOBIL Compact

More Compact... easier to use

Transportability Plus

The sleek, space-saving design of SIREMOBIL Compact yields maximum mobility even in the smallest, busiest environments.

Transportability reaches a new standard with the C-arm chassis and monitor trolley which are both lightweight and small in dimension.

Precise positioning and fast changes of projections are made easily through the fully counterbalanced C-arm with friction brakes and motorized vertical movement.

Wide Angle Movement- Orbital Rotation

In addition, SIREMOBIL Compact features a 125° orbital movement – wider than most C-arms in the industry. The -35° overscan conveniently enables steeper projections, important for a variety of applications, including orthopedics, EP and pain management.

Single-key operation

The streamlined, easy-to-use operator console offers fast access to all functions and operating modes by a single key-stroke. Proficiency does not require extensive instruction, but rather is easily mastered.

The features and benefits of SIREMOBIL Compact extend well into its finishing touches. Note the refined steering mechanism of the chassis, the comfortable design of the hand-held fluoro switch and the integrated wheel cable deflectors.



User friendly operator console

Compact design, ease of use
and important finishing touches –
all at their very best

A convenient handrail makes the C-arm easy to guide



The hand-held fluoro switch controls release of exposure and image storage on the fly



The simple steering mechanism ensures maximum mobility

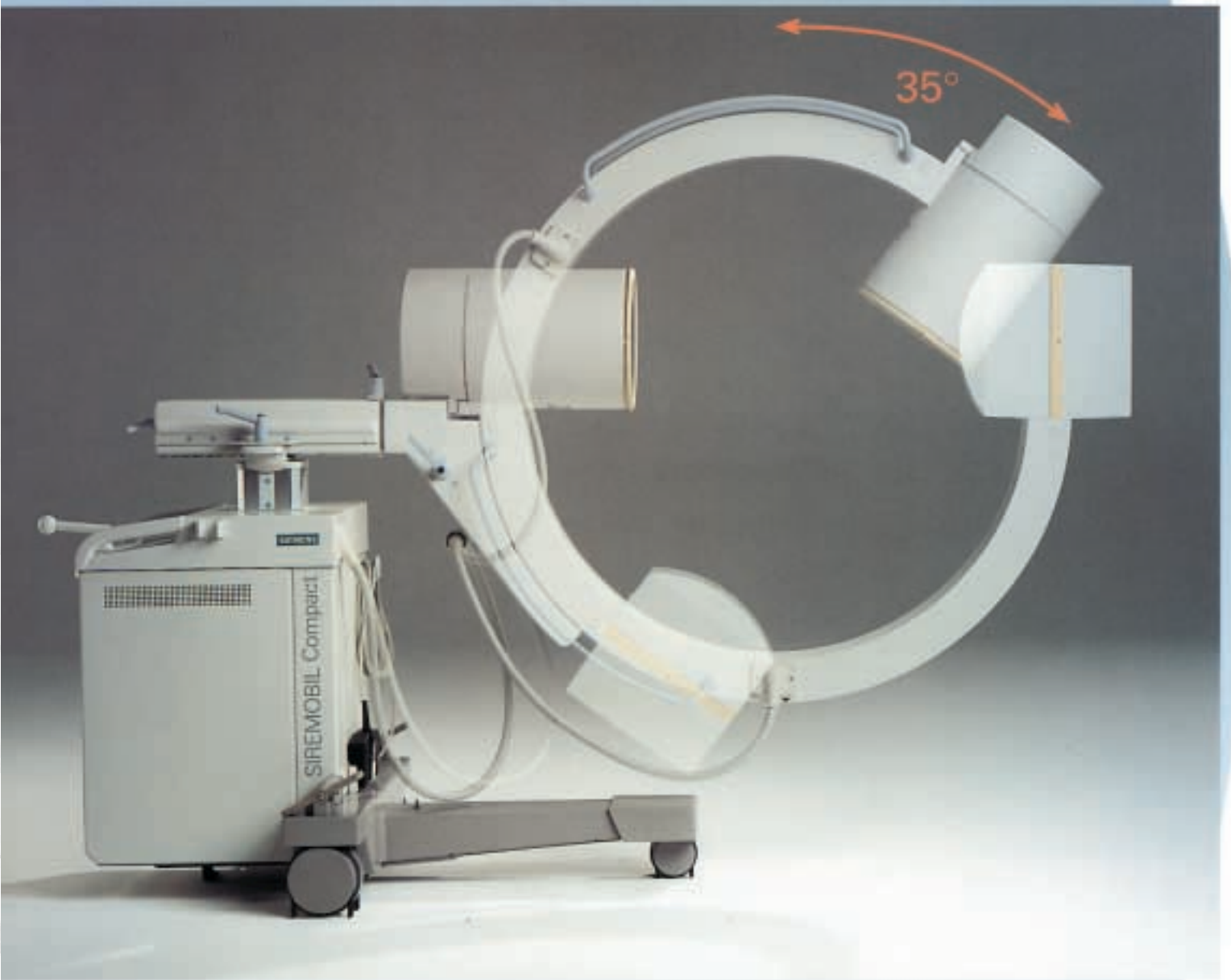


Integrated wheel cable deflectors sweep away any cables



Select SUB with a single key stroke





SIREMOBIL Compact

C.A.R.E.* about dose-savings

Maximum Performance/ Minimum Dose

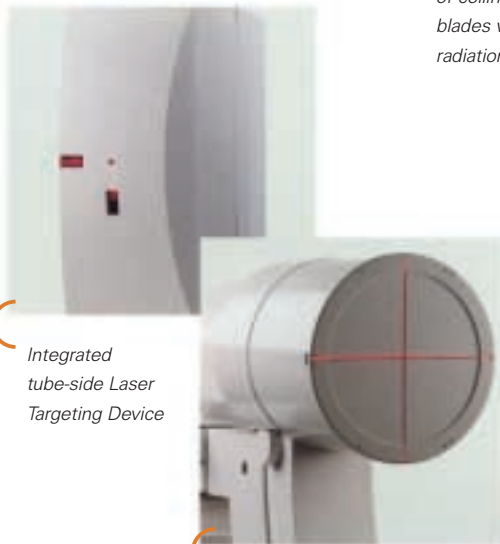
SIREMOBIL Compact supports Siemens C.A.R.E.* initiative, which promotes technical solutions and applications designed to make imaging safer for clinicians and for patients.

Radiation-saving features on the SIREMOBIL Compact include:

- Dual collimation systems: iris collimators and semi-transparent slot collimators
- Visual indicators of collimator blades for radiation-free positioning of the shutters
- Digital image rotation without radiation
- Laser Aimer for accurate, radiation-free positioning
- Laser Targeting Device for precision marking during intermedullary nailings and other orthopedic procedures
- Selectable dose levels



Laser Aimer attached at the I.I.



Integrated tube-side Laser Targeting Device

Matching of visible crosshairs and lead cross at the I.I.

Pulsed Fluoroscopy

Standard on SIREMOBIL Compact is the C.A.R.E.-related feature of pulsed fluoroscopy – the programming of intermittent pulses and pauses.

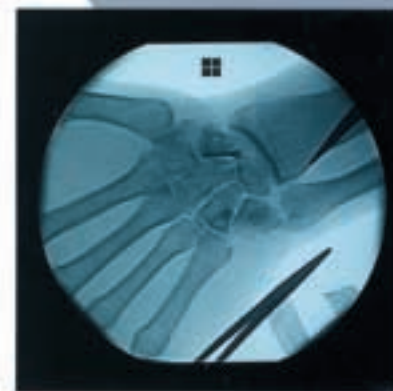
Depending upon the selected pulse width and pause interval, as well as radiological requirements of the particular procedure, the pulsed fluoroscopy technique can result in a dose reduction of up to 70% – without compromising image quality.

Advantages of Rotation

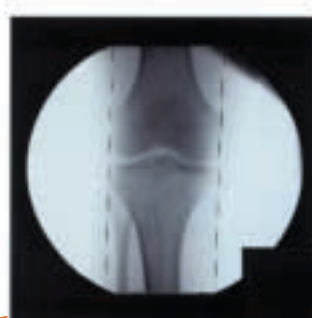
Camera rotation in conjunction with digital image rotation enables fast, dose-free image orientation. The result is a significant reduction in dose for both patient and staff.

Diamentor

An optional diamentor measures the Dose Area Product (DAP) of the fluoroscopy field. The DAP result is displayed on the image monitor for easy viewing and increased dose-awareness. The DAP can appear on hard copy images, the choice is yours.



LIH with cursor at the top of the image



Graphical display of collimator blades without radiation...



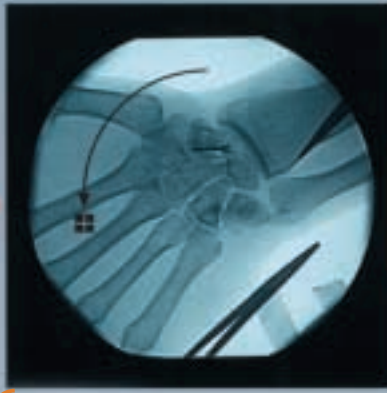
...as they move in to limit the field

SIREMOBIL Compact – Lower dose for patients and staff alike

*Combined Applications to Reduce Exposure



Control image rotation by a single key stroke



Position cursor to the anatomy desired at top of next image



System calculates image rotation, which is displayed with next fluoro



SIREMOBIL Compact

Brilliant SIREMOBIL images, outstanding memory capabilities

Consistent Excellence

The ideally-matched components of the SIREMOBIL Compact ensure consistent, high image quality:

- For precision in diagnosis and intervention
- For maximum resolution in fluoroscopy and radiography
- High-definition X-ray tube with a small focal spot, and high heat dissipation
- Integrated with a high-frequency generator

While the power is there, all operating modes are optimized toward minimal radiation dose.

Looking for even greater contrast? Consider optional SIMOMED® monitors – industry-renowned for high brightness and high contrast. Ideally-suited for the O.R. suite, SIMOMED monitors automatically adjust to ambient room-lighting via an in-room sensor.

Memory Makes A Difference

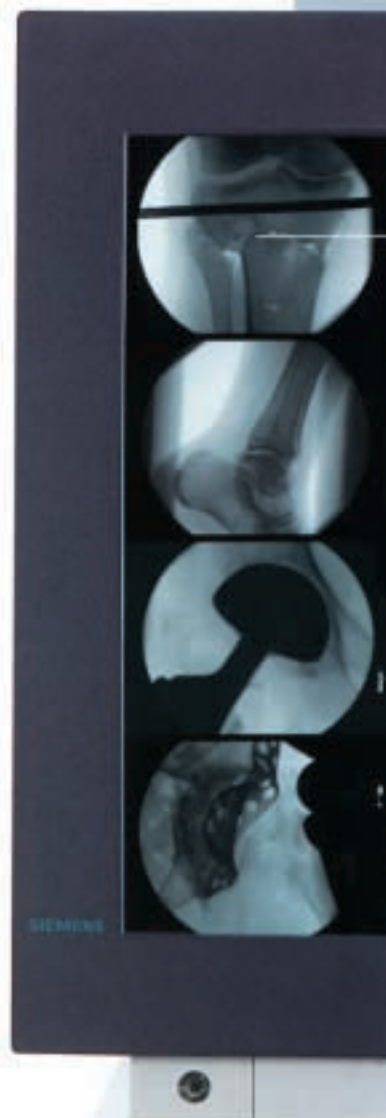
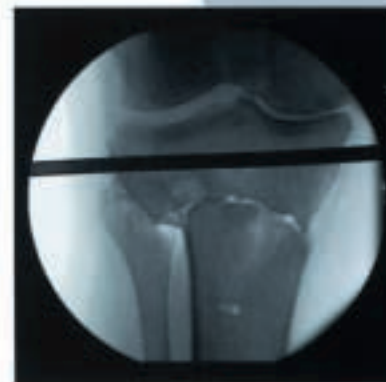
The choice of memory options tailors your SIREMOBIL Compact to your clinical needs and processing requirements – whether it's last image hold with a reference image viewed on a single monitor with horizontal/vertical split, 16-image collage for quick review of shared images, increased storage and post-processing functions, or subtraction capabilities.

Important features common to all versions include 5 user programs for easy selection and adaptation, as well as continuity among various users. Post-processing features such as zoom and auto-windowing provide accuracy and convenience, while adjustable dose-output helps keep radiation levels as low as possible.

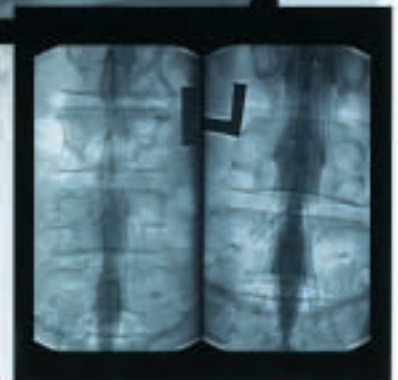
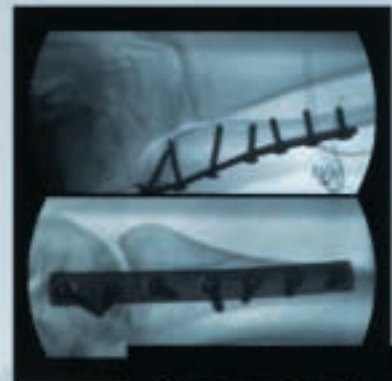
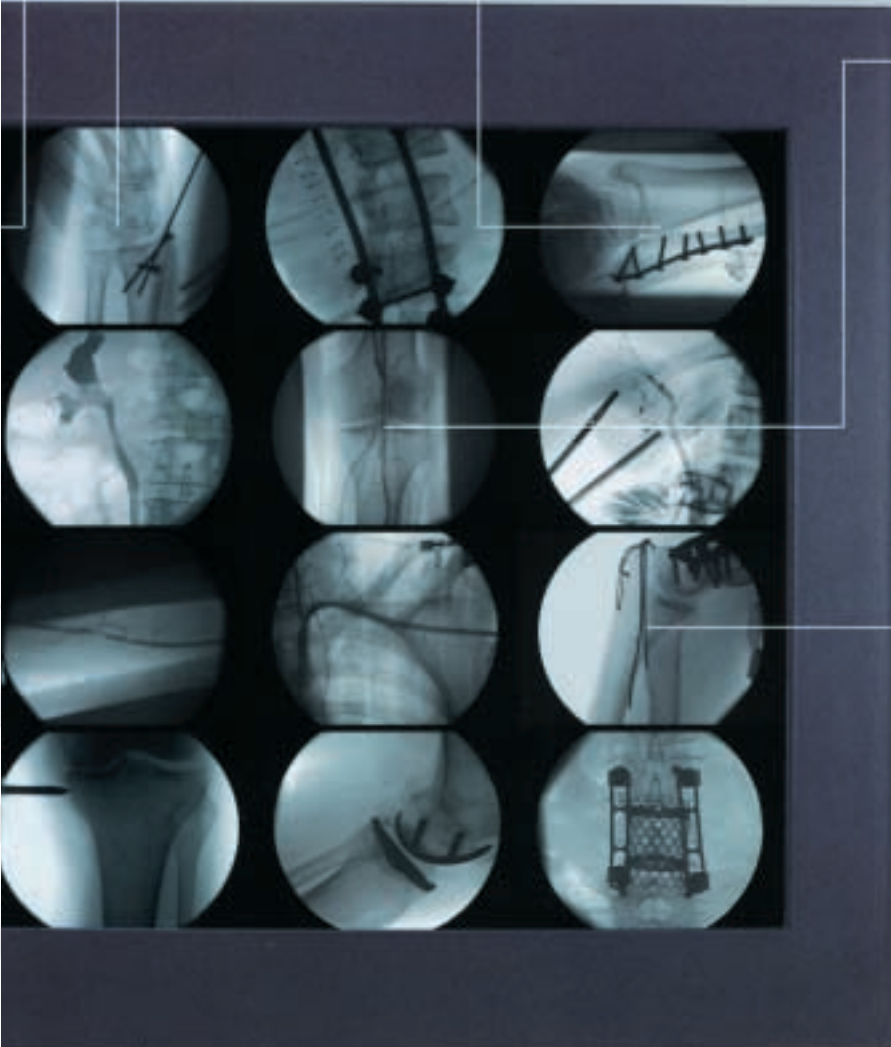
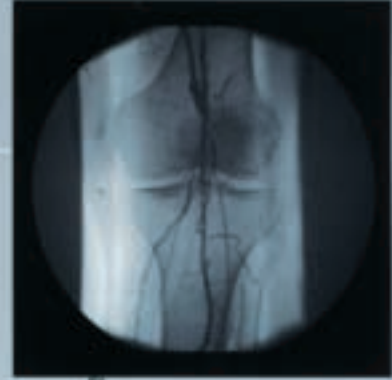
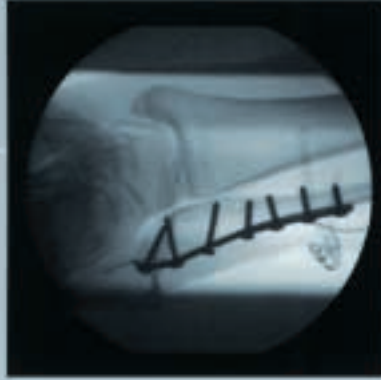
The Functions Of Memory*

- ✓ 16-image collage
- ✓ Zoom/Room
- ✓ 5 user programs
- ✓ Auto-windowing
- ✓ Positive/negative image inversion
- ✓ Video recording/playback
- ✓ Electronic shutters-horizontal and vertical
- ✓ Collimator indicators

*Certain functions are not available with the basic memory version.



SIREMOBIL Compact, the image quality
you have come to expect



SIREMOBIL Compact

Your mobile solution for vascular imaging

Maneuverable Intervention

The increasing use of interventional techniques in the OR has created a need for vascular capabilities in mobile systems. SIREMOBIL Compact with subtraction memory is a versatile, maneuverable system optimized for interventional use.

Optimized vessel presentation

The high detail recognition of vessels required for vascular and neuro work is achieved through the unique SIREMATIC® iodine-curve. A single-key selection sets the most suitable imaging parameters, and enables simultaneous display of native and subtracted images.

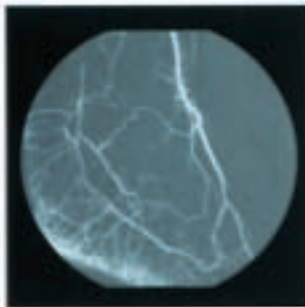
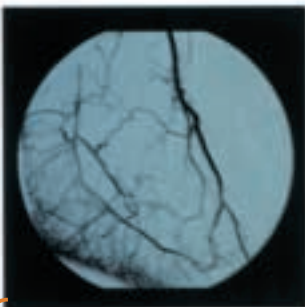
There are three subtraction modes:

- Automatic display of max./min. peak opacification in the vessel
- Real-time subtraction
- Roadmap

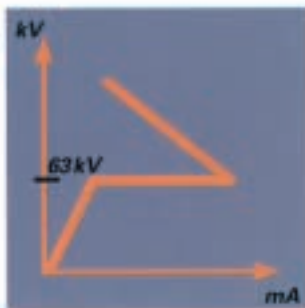
From the "Inject" prompt through termination of the procedure, SIREMOBIL Compact's simplicity of use and reliability give you the confidence to concentrate on the patient, the diagnosis, and the procedure itself.

Vascular Features:

- ✓ Digital Angiography
- ✓ Digital Subtraction Angiography
- ✓ Roadmap
- ✓ Remask
- ✓ Pixelshift
- ✓ Landmark
- ✓ Simultaneous display of native and subtracted image
- ✓ Unique Iodine SIREMATIC curve
- ✓ Max/Min Peak Opacification

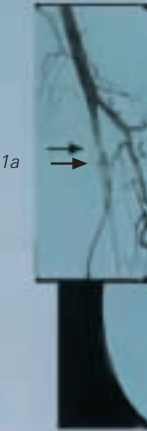


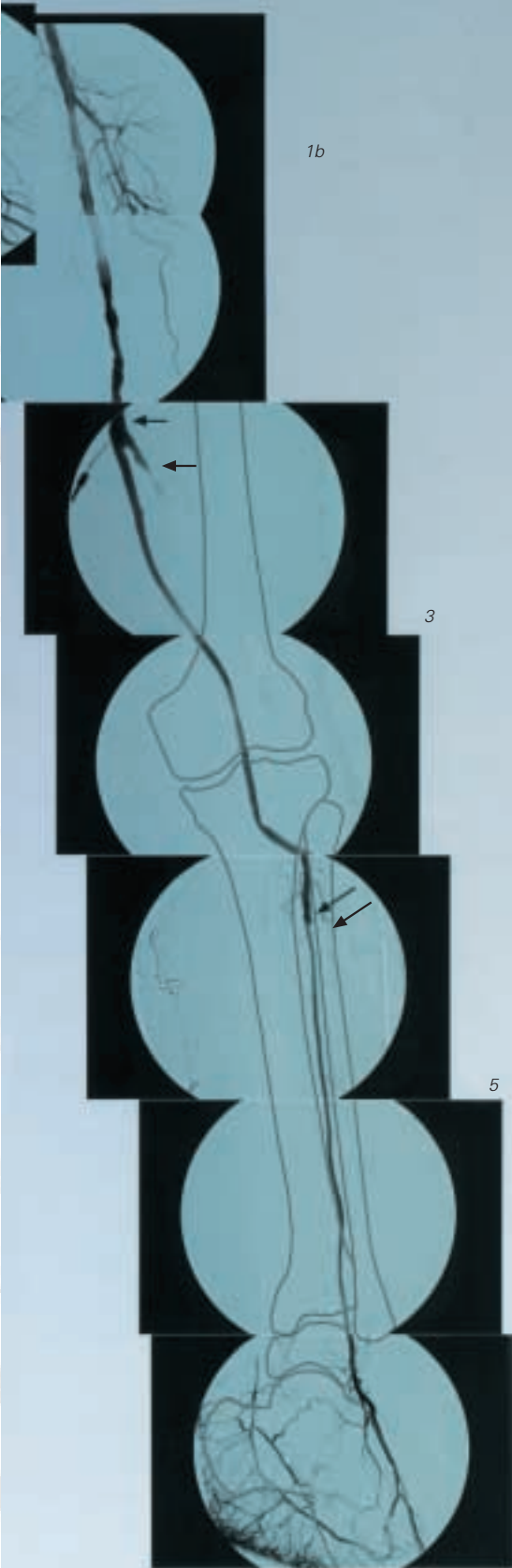
Positive and negative image display and documentation during subtraction



SIREMOBIL Compact with unique SIREMATIC iodine curve provides preprogrammed X-ray values matched for vascular technique optimization, resulting in high-detail recognition of vessels, essential for vascular and neuro applications

SIREMOBIL Compact – a product of Siemens' years of experience in angiography and DSA



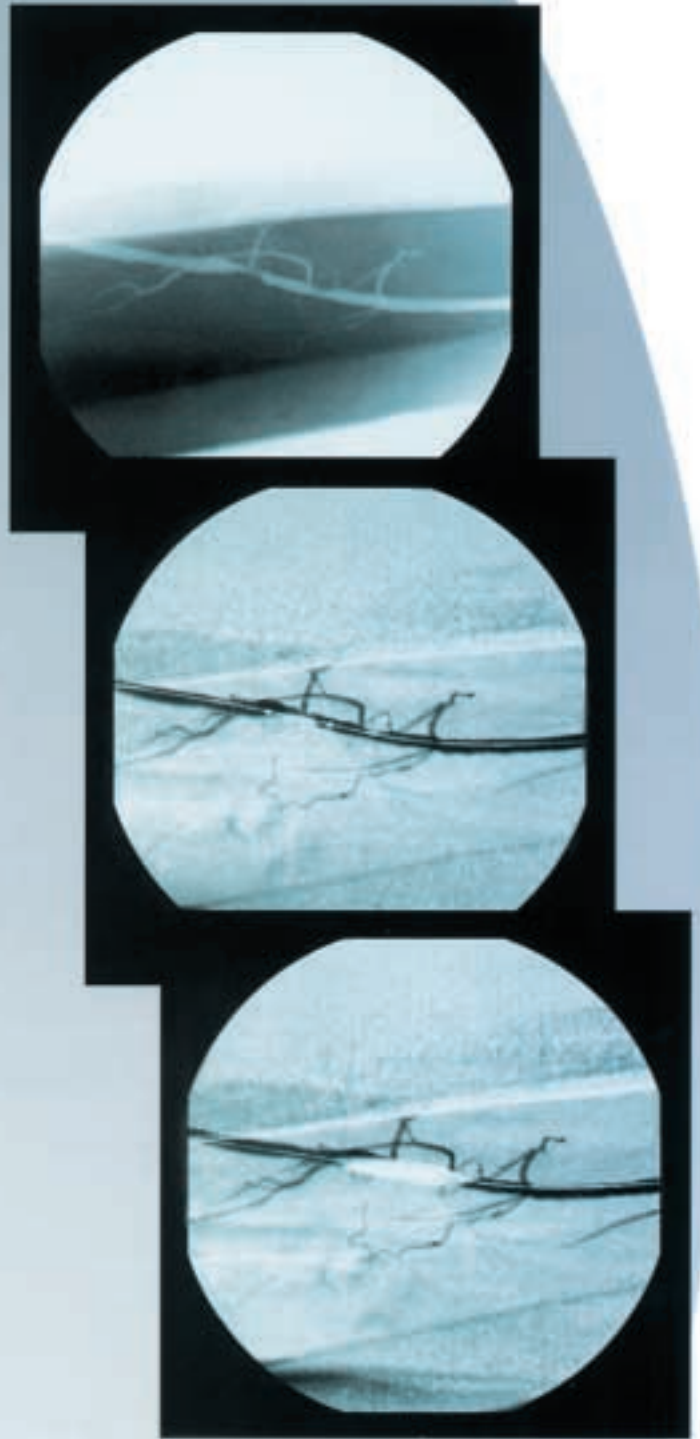


1b

3

5

1a: before dilatation of the artery femoralis superficialis
 1b: after dilatation as a precondition for a femoro-cruralen bypass of the vein (distal origin)
 3: proximal bypass anastomoses
 5: distal bypass anastomoses



Roadmapping

Dilatation of the femoral artery

- Automatic storage of the mask and peak opacification image
- Easy and fast positioning of the catheter
- Positioning of balloon catheter

Images courtesy by
 Friedrich-Alexander-Universität
 Erlangen-Nürnberg
 Dept. of Vascular Surgery
 PD. Dr. Lang
 Erlangen, Germany

SIREMOBIL Compact

On-site upgradeability

Looking to the Future

The modular design of SIREMOBIL Compact offers a fully upgradeable system that will meet your needs now, as well as into the future.

For example, the single monitor version allows viewing of images on a split-screen displaying both the last image hold (LIH) and the reference image. As clinical requirements evolve, the system can be upgraded to a two-monitor configuration, or to SIMOMED monitors for highest brightness and highest contrast.

Memory capabilities are also upgradeable – choose between the basic storage and the expanded memory. Or, to equip the system for vascular procedures, select the subtraction memory, along with the highest image storage capacity.

A magneto optical disk drive (MOD) stores images to a disk in TIFF or DICOM 3.0 format. An on-line interconnect is possible via DICOM direct-link.

The building block design of the SIREMOBIL Compact ensures that the system configuration can be tailored to meet requirements, however they may evolve.



Laser Aimer



Image Storage Capacity



Laser Targeting Device

Flexible and upgradeable configurations for all your clinical needs

Vascular

2 Monitors

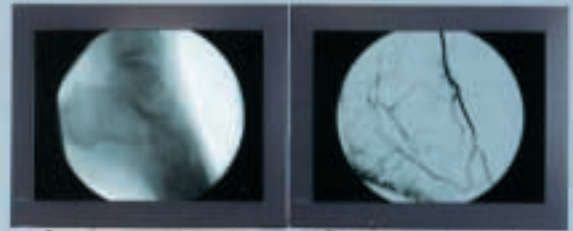
Video Printer

VCR

DICOM

MOD

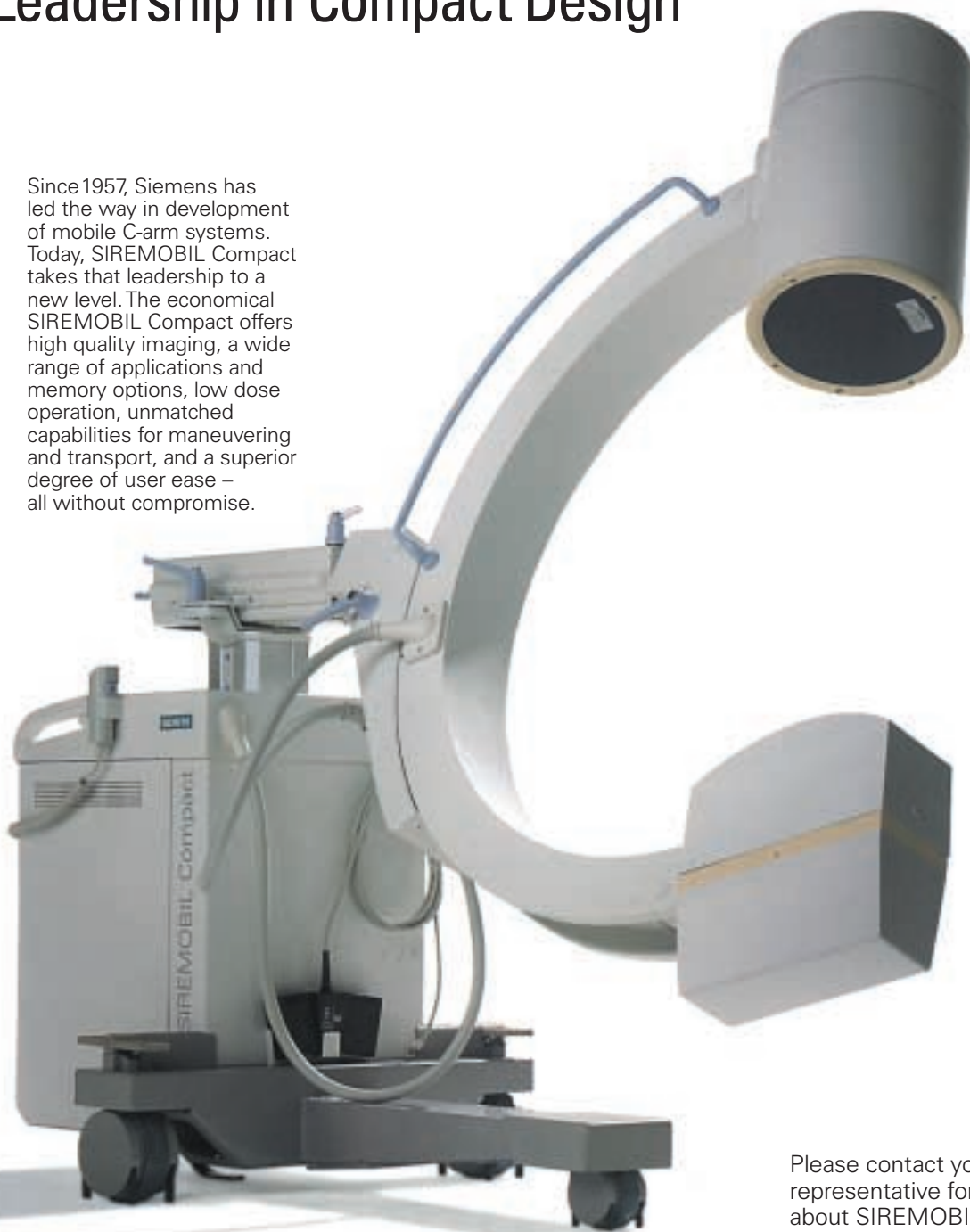
*Multi
Format
Camera*



SIREMOBIL Compact

Leadership in Compact Design

Since 1957, Siemens has led the way in development of mobile C-arm systems. Today, SIREMOBIL Compact takes that leadership to a new level. The economical SIREMOBIL Compact offers high quality imaging, a wide range of applications and memory options, low dose operation, unmatched capabilities for maneuvering and transport, and a superior degree of user ease – all without compromise.



Please contact your local Siemens sales representative for more information about SIREMOBIL Compact and other top-quality Siemens imaging systems.

Siemens reserves the right to modify the design and specifications contained herein without prior notice.

Note:
Of necessity, original images always lose a certain amount of detail when reproduced.

Siemens Aktiengesellschaft
Medical Engineering Group
Henkestrasse 127, D-91052 Erlangen
Telephone (91 31) 84-0
Internet: <http://www.med.siemens.com>

Siemens Medical Systems, Inc.
186 Wood Avenue South
Iselin, NJ 08830-2770
(732) 321-4500

Siemens medical
Solutions that help

Order No. A91100-M1320-D934-02-7600
Printed in Germany
BKW 61419 WS 06006.